

MEDICAL LABORATORY TESTING OF IMPLANTABLE TITANIUM ALLOYS

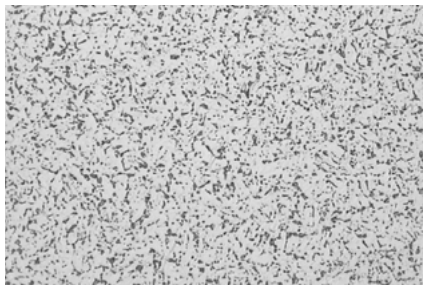
FORECREU cannulated bars are designed to comply with both ISO and ASTM requirements

REFERENCE SPECIFICATIONS

- Ti 6Al 4V ELI to ISO 5832-3 and ASTM F136
- Ti 6Al 7Nb to ISO 5832-11 and ASTM F1295

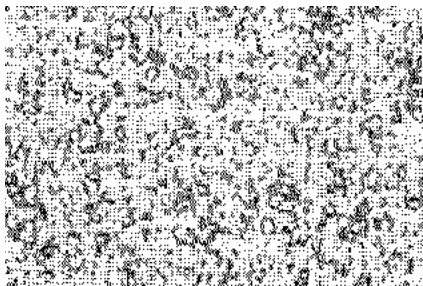
MICROGRAPHIC ISO AND ASTM SPECIFICATIONS

- Free of visible micro inclusion (x 200).
- a+b equiaxed structure, according to ETTC2 A1-A9 reference pictures.
- Free of a case (hole surface and OD).
- Free of a network and a platelets.

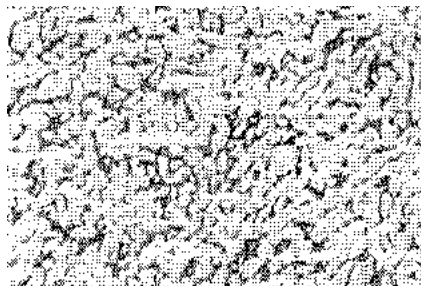


**FORECREU
TYPICAL**

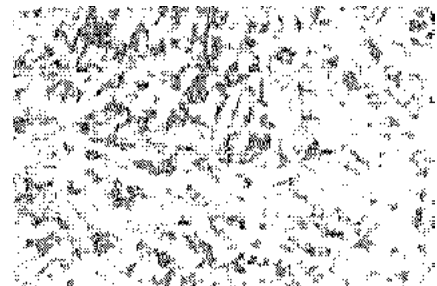
X 275



A1 X 200



A4 X 200



A9 X 200

Alloy		%Al	%Nb	%V	%Fe	%O	%C	%N	%H	%Ta
Ti6Al4VELI	mini	5.5	-	3.5						-
	maxi	6.5	-	4.5	0.25	0.13	0.08	0.05	0.012	-
Ti6Al7Nb	mini	5.5	6.5	-						
	maxi	6.5	7.5	-	0.25	0.20	0.08	0.05	0.009	0.5

SAMPLING PROCEDURE

Each batch is sampled according to ANSI / ASQC Z1.4 1993.

Please contact our office for any additional information or documentation. Dimensional information and technical drawings in this document are for reference only. Some of the product characteristics indicated in this document may be modified at any time at the company's discretion. Our company is not responsible for the use of our products outside standards prescription and what our commercial documents are indicating.